

GÖLZ®



Table saws

www.golzgroup.com

Bridgesaws for tiles and natural stones



Professional tile cutting machines!



TS200 - Blade Ø 200 mm

Cutting length 720 mm

TS250 - Blade Ø 250 mm

Cutting length 1.140 mm

- Cutting head adjustable up to 45° (Jolly cutting)
- Removable water tub, easy for cleaning
- Foldable legs
- Adjustable cutting length
- Removable cutting table, easy for cleaning
- Electric water pump with quick coupling, easy for changing the pump
- Pluggable blade guard for easy changing of diamond blade



45° miter-cut built-in



extension working table (optional accessory)



removable water tub



removable cutting table



transport handles



foldable legs



quick coupling of water pump



transport wheels

| Specifications | GÖLZ TS200 | GÖLZ TS250 |
|---------------------|----------------------------|-------------------------|
| Motor | Electric, 230V, 50Hz, IP54 | |
| Power | 1,3 kW | |
| Max. cutting depth | 40 mm | 65 mm |
| Max. blade size | 200 mm | 250 mm |
| Arbor hole | 25,4 mm | 25,4 mm |
| Cutting length | 560 mm (720 mm) | 980 mm (1140 mm) |
| Shaft speed | 2.800 min ⁻¹ | 2.800 min ⁻¹ |
| 45° miter-cut | Built-In | Built-In |
| Water pump | S2, 230 V, 50 Hz, 55 Watt | |
| Blade flange size Ø | 64 mm | 64 mm |
| Transport wheels | yes | yes |
| Cutting table (LxW) | 720 x 480 mm | 1.140 x 480 mm |
| Dimensions (LxWxH) | 1.220 x 540 x 1.299 mm | 1.640 x 540 x 1.299 mm |
| Weight | 57 kg | 72 kg |
| Order number | 0289 200 1000 | 0289 250 1000 |

| Accessories | Order number |
|--------------------------------------|---------------|
| Side table (optional accessory) | 0289 200 1900 |
| Spare water pump with connector plug | 0289 400 9002 |
| Set of Transport wheels | 0289 400 9068 |

**Robust bridge saw for the stone industry.
Precise cutting of granite, marble, terrazzo and tiles.**



transport handles



foldable legs



quick coupling of water pump



transport wheels



45° miter-cut built-in



adjustable cutting length



extension working table
(optional accessory)



removable water tub

Bridge Saw Cutting length 1.200 mm Blade-Ø 350 mm

- Cutting head adjustable up to 45°
- Diamond blade Ø 350 mm
- Max. cutting depth 110 mm
- Removable water tub, easy for cleaning
- Electric water pump with quick coupling, easy for changing the pump
- Foldable legs
- Transport wheel, easy for moving and loading
- Adjustable cutting length
- Removable cutting table, easy for cleaning
- The front shield prevents operator against water spray
- Embedded cable protection chain, protects cables against damage
- Special water nozzle for optimized water cooling

| Specifications | GÖLZ GS350 |
|---------------------|----------------------------|
| Motor | Electric, 230V, 50Hz, IP54 |
| Power | 2,2 kW |
| Max. cutting depth | 110 mm |
| Max. blade size | 350 mm |
| Arbor hole | 25,4 mm |
| Cutting length | 1.000 mm (1.200 mm) |
| Shaft speed | 2.800 min ⁻¹ |
| 45° miter-cut | Built-In |
| Water pump | S2, 230 V, 50 Hz, 55 Watt |
| Blade flange size Ø | 90 mm |
| Transport wheels | yes |
| Cutting table (LxW) | 1.200 x 530 mm |
| Dimensions (LxWxH) | 1.710 x 700 x 1.360 mm |
| Weight | 95 kg |
| Order number | 0289 350 3000 |

| Accessories | Order number |
|--------------------------------------|---------------|
| Spare water pump with connector plug | 0289 400 9002 |
| Side table (optional accessory) | 0289 350 3900 |

Professional aluminium bridge saw!
The professional solution for long granite and natural stones.



transport handles



foldable legs



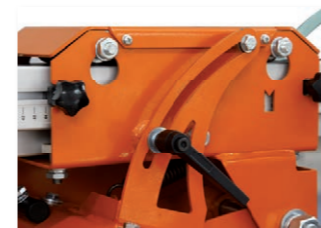
handle wheel feeding system



transport wheels



45° miter-cut built-in



adjustable cutting length



extension working table (optional accessory)



removable water tub

Aluminium Bridge Saw
Cutting length up to 2.000 mm
Blade-Ø 350 mm

- Strong aluminium structure
- Cutting head adjustable up to 45°
- Max. cutting length up to 2 meter
- Removable water tub, easy for cleaning
- Electric water pump with quick coupling, easy for changing the pump
- Foldable legs
- Transport wheel, easy for moving and loading
- Adjustable cutting length
- The front shield prevents operator against water spray
- Embedded cable protection chain, protects cables against damage
- Pluggable blade guard for easy changing of diamond blade
- Handle wheel feeding system, easy for long cutting
- Special water nozzle for optimized water cooling
- Removable cutting table, easy for cleaning

| Specifications | GÖLZ GS350A-M | GÖLZ GS350A-XL |
|---------------------|----------------------------|-------------------------|
| Motor | Electric, 230V, 50Hz, IP54 | |
| Power | 2,2 kW | 2,2 kW |
| Max. cutting depth | 110 mm | 110 mm |
| Max. blade size | 350 mm | 350 mm |
| Arbor hole | 25,4 mm | 25,4 mm |
| Cutting length | 1.300 mm (1.500 mm) | 1.800 mm (2.000 mm) |
| Shaft speed | 2.800 min ⁻¹ | 2.800 min ⁻¹ |
| 45° miter-cut | Built-In | Built-In |
| Water pump | S2, 230 V, 50 Hz, 55 Watt | |
| Blade flange size Ø | 90 mm | 90 mm |
| Transport wheels | yes | yes |
| Cutting table (LxW) | 1.650 x 529 mm | 2.000 x 529 mm |
| Dimensions (LxWxH) | 1.810 x 740 x 1.490 mm | 2.310 x 740 x 1.490 mm |
| Weight | 113 kg | 135 kg |
| Order number | 0289 350 4000 | 0289 350 5000 |

| Accessories | Order number |
|--------------------------------------|---------------|
| Spare water pump with quick coupling | 0289 400 9002 |
| Set of Transport wheels | 0289 400 2910 |
| Side table (optional accessory) | 0289 350 3900 |

High performance bench- and block-saws for the construction site



Ultra compact and light-weight masonry saw Cutting length 560 mm

- Compact design, easy for moving
- Removable water tub, easy for cleaning
- Electric water pump with quick coupling, easy for changing the pump
- Removable blade guard for easy blade change
- Special water nozzle for optimized water cooling
- Transportation wheel, easy for moving



removable water tub



special water nozzle

| Specifications | GÖLZ MS350C |
|---------------------|----------------------------|
| Motor | Electric, 230V, 50Hz, IP54 |
| Power | 2,2 kW |
| Max. cutting depth | 110 mm |
| Max. blade size | 350 mm |
| Arbor hole | 25,4 mm |
| Cutting length | 560 mm |
| Shaft speed | 2.800 min ⁻¹ |
| 45° miter-cut | No, Miter-block optional |
| Water pump | S2, 230 V, 50 Hz, 55 Watt |
| Blade flange size Ø | 90 mm |
| Transport wheels | yes |
| Cutting table (LxW) | 400 x 400 mm |
| Dimensions (LxWxH) | 960 x 670 x 1.250 mm |
| Weight | 56 kg |
| Order number | 0289 350 1000 |

| Accessories | Order number |
|--------------------------------------|---------------|
| 45° Miter-block | 0289 350 1900 |
| Set of Transport wheels | 0289 400 9002 |
| Spare water pump with connector plug | 0289 400 9068 |



45° Miter-block
(Accessories)

Compact and light-weight masonry saw Cutting length 700 mm

- Compact design, easy for moving
- Removable water tub, easy for cleaning
- Electric water pump with quick coupling, easy for changing the pump
- Removable blade guard for easy blade change
- Special water nozzle for optimized water cooling
- Transportation wheel, easy for moving
- Foldable legs



transport wheels



quick coupling of water pump

| Specifications | GÖLZ MS350L |
|---------------------|----------------------------|
| Motor | Electric, 230V, 50Hz, IP54 |
| Power | 2,2 kW |
| Max. cutting depth | 110 mm |
| Max. blade size | 350 mm |
| Arbor hole | 25,4 mm |
| Cutting length | 700 mm |
| Shaft speed | 2.800 min ⁻¹ |
| 45° miter-cut | No, Miter-block optional |
| Water pump | S2, 230 V, 50 Hz, 55 Watt |
| Blade flange size Ø | 90 mm |
| Transport wheels | yes |
| Cutting table (LxW) | 600 x 530 mm |
| Dimensions (LxWxH) | 1.100 x 720 x 1.250 mm |
| Weight | 63 kg |
| Order number | 0289 350 2000 |

| Accessories | Order number |
|--------------------------------------|---------------|
| 45° Miter-block | 0289 350 1900 |
| Set of Transport wheels | 0289 400 9002 |
| Spare water pump with connector plug | 0289 400 9068 |



45° Miter-block
(Accessories)

Compact and universal masonry saw with 45° tilting head!



Cutting length 700 mm

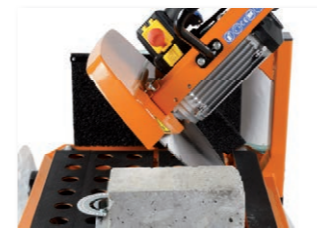
Blade-Ø 400 mm

Cutting depth 137 mm

- Huge cutting table: 600x530 mm
- Removable water tub, easy for cleaning
- Foldable legs
- Electric water pump with quick coupling, easy for changing the pump
- Max. cutting length up to 700 mm
- Removable blade guard for easy blade change
- Special water nozzle for optimized water cooling
- Transportation wheel, easy for moving



special water nozzle



cutting head adjustable up to 45°



transport handles



foldable legs



quick coupling of water pump



transport wheels



removable water tub

| Specifications | GÖLZ MS400 |
|---------------------|----------------------------|
| Motor | Electric, 230V, 50Hz, IP54 |
| Power | 2,2 kW |
| Max. cutting depth | 137 mm |
| Max. blade size | 400 mm |
| Arbor hole | 25,4 mm |
| Cutting length | 700 mm |
| Shaft speed | 2.800 min ⁻¹ |
| 45° miter-cut | Built-In |
| Water pump | S2, 230 V, 50 Hz, 55 Watt |
| Blade flange size Ø | 90 mm |
| Transport wheels | yes |
| Cutting table (LxW) | 600 x 530 mm |
| Dimensions (LxWxH) | 1.100 x 720 x 1.290 mm |
| Weight | 66 kg |
| Order number | 0289 400 1000 |

| Accessories | Order number |
|--------------------------------------|---------------|
| Spare water pump with connector plug | 0289 400 9002 |
| Set of Transport wheels | 0289 400 9068 |

Professional universal aluminium masonry saw with 45° tilting head!



Cutting length 800 mm
Blade-Ø 400 mm
Cutting depth 137 mm

- Removable water tub, easy for cleaning
- Foldable legs
- Electric water pump with quick coupling, easy for changing the pump
- Strong aluminium structure
- Max. cutting length up to 800 mm
- Removable blade guard for easy blade change
- Special water nozzle for optimized water cooling
- Transportation wheel, easy for moving



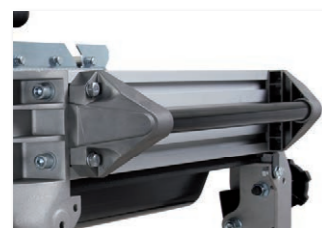
special water nozzle



aluminium cutting card



removable water tub



transport handles



foldable legs



quick coupling of water pump



transport wheels

| Specifications | GÖLZ MS400A |
|---------------------|----------------------------|
| Motor | Electric, 230V, 50Hz, IP54 |
| Power | 2,2 kW |
| Max. cutting depth | 137 mm |
| Max. blade size | 400 mm |
| Arbor hole | 25,4 mm |
| Cutting length | 800 mm |
| Shaft speed | 2.800 min ⁻¹ |
| 45° miter-cut | Built-In |
| Water pump | S2, 230 V, 50 Hz, 55 Watt |
| Blade flange size Ø | 90 mm |
| Transport wheels | yes |
| Cutting table (LxW) | 560 x 560 mm |
| Dimensions (LxWxH) | 1.390 x 750 x 1.330 mm |
| Weight | 79 kg |
| Order number | 0289 400 2000 |

| Accessories | Order number |
|--------------------------------------|---------------|
| Spare water pump with connector plug | 0289 400 9002 |
| Set of Transport wheels | 0289 400 2910 |

Powerful Aluminium-block saw with parallel guided cutting head, ideal for cutting bricks, poroton blocks and marble blocks!

- Cutting head with elastic device, easy for operation
- Electric water pump with quick coupling, easy for changing the pump
- Strong aluminium structure
- Removable water tub, easy for cleaning
- Foldable legs
- Special water nozzle for optimized water cooling



transport handles



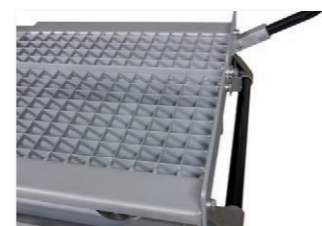
foldable legs



removable water tub



special water nozzle



Cutting cart with steel bearing rollers

| Specifications | GÖLZ MS700A Basic | |
|---------------------|---|-------------------------|
| Motor | 230 V, 50 Hz, IP54 | 400 V, 50 Hz, IP54 |
| Power | 2,2 kW | 2,4 kW |
| Max. cutting depth | 280 mm | 280 mm |
| Max. blade size | 700 mm | 700 mm |
| Arbor hole | 30 mm | 30 mm |
| Cutting length | 650 mm (280 mm material height) 800 mm (50 mm material height) | |
| Shaft speed | 1.450 min ⁻¹ | 1.450 min ⁻¹ |
| 45° miter-cut | no | no |
| Water pump | S2, 230 V, 50 Hz, 55 Watt | |
| Blade flange size Ø | 140 mm | 140 mm |
| Transport wheels | no | no |
| Cutting table (LxW) | 510 x 540 mm | 510 x 540 mm |
| Dimensions (LxWxH) | 1.630 x 760 x 1.600 mm | 1.630 x 760 x 1.600 mm |
| Weight | 115 kg | 115 kg |
| Order number | 0289 700 2000 | 0289 700 1000 |

| Accessories | Bestellnummer |
|--------------------------------------|---------------|
| Spare water pump with connector plug | 0289 400 9002 |
| Set of Transport wheels | 0289 400 2910 |

Powerful Aluminium-block saw with parallel guided cutting head, ideal for cutting bricks, poroton blocks and marble blocks!

- Cutting head with elastic device, easy for operation
- Electric water pump with quick coupling, easy for changing the pump
- Strong aluminium structure
- Removable water tub, easy for cleaning
- Foldable legs
- Special water nozzle for optimized water cooling
- Crane eye



transport handles



foldable legs



removable water tub



special water nozzle



Cutting cart with steel bearing rollers

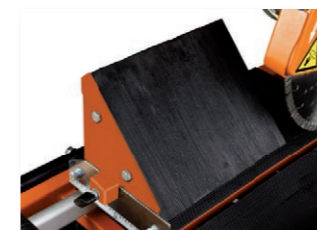
| Specifications | GÖLZ MS700A | |
|---------------------|---|-------------------------|
| Motor | 230 V, 50 Hz, IP54 | 400 V, 50 Hz, IP54 |
| Power | 2,2 kW | 2,4 kW |
| Max. cutting depth | 280 mm | 280 mm |
| Max. blade size | 700 mm | 700 mm |
| Arbor hole | 30 mm | 30 mm |
| Cutting length | 650 mm (280 mm material height) 800 mm (50 mm material height) | |
| Shaft speed | 1.450 min ⁻¹ | 1.450 min ⁻¹ |
| 45° miter-cut | no | no |
| Water pump | S2, 230 V, 50 Hz, 55 Watt | |
| Blade flange size Ø | 140 mm | 140 mm |
| Transport wheels | no | no |
| Cutting table (LxW) | 510 x 540 mm | 510 x 540 mm |
| Dimensions (LxWxH) | 1.630 x 760 x 1.600 mm | 1.630 x 760 x 1.600 mm |
| Weight | 125 kg | 125 kg |
| Order number | 0289 700 2010 | 0289 700 1010 |

| Accessories | Bestellnummer |
|--------------------------------------|---------------|
| Spare water pump with connector plug | 0289 400 9002 |
| Set of Transport wheels | 0289 400 2910 |

Powerful and robust masonry saw with electric motor or Honda gasoline engine.

Cutting length 650 mm
Blade-Ø 400 mm
Cutting depth 150 mm (280 mm)

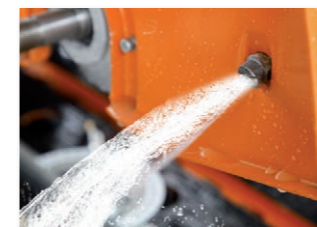
- Optional electrical motor or gasoline engine
- Cutting head with elastic device, easy for operation
- Electric water pump with quick coupling, easy for changing the pump (electrical motor version)
- High efficient mechanical water pump (Honda version)
- Max. cutting depth up to 150 mm and 280 mm (double-sided cutting)
- Max. cutting length up to 650 mm
- Removable water tub, easy for cleaning
- Foldable legs
- Removable blade guard for easy blade change
- Special water nozzle for optimized water cooling
- Transportation wheel, easy for moving



45° Miter-block (Accessory)



Honda gasoline engine



special water nozzle



cutting depth up to 280 mm (double-sided cutting)



transport handles



foldable legs



transport wheels



removable water tub

| Specifications | GÖLZ BS400 | GÖLZ BS400 |
|---------------------|--|---------------------------------|
| Motor | electric, 230 V / 400 V, 50 Hz | Honda GX160 |
| Power | 2,2 kW | 4,0 kW / 5,5 PS |
| Max. cutting depth | 150 mm (double-sided cutting 280 mm) | |
| Max. blade size | 400 mm | 400 mm |
| Arbor hole | 25,4 mm | 25,4 mm |
| Cutting length | 650 mm | 650 mm |
| Shaft speed | 2.650 min ⁻¹ | 2.550 min ⁻¹ |
| 45° miter-cut | No, Miter-block optional | No, Miter-block optional |
| Water pump | S2, 230 V, 50 Hz, 55 Watt | efficient mechanical water pump |
| Blade flange size Ø | 90 mm | 90 mm |
| Transport wheels | yes | yes |
| Cutting table (LxW) | 600 x 530 mm | |
| Dimensions (LxWxH) | 1.110 x 640 x 1.400 mm | |
| Weight | 90 kg | 93 kg |
| Order number | 0282 400 1000 (230 V) 0282 400 1100 (400 V) | 0282 400 1300 |

| Accessories | Order number |
|--------------------------------------|---------------|
| Spare water pump with connector plug | 0289 400 9002 |
| 45° Miter-block | 0289 350 1900 |

Compact Block saw - with electric motor. Ideal for cutting bricks, poroton blocks and marble blocks

Cutting length 400 mm / 600 mm
Blade-Ø 600 mm
Cutting depth 235 mm

- Cutting head with elastic device, easy for operation
- Electric water pump with quick coupling, easy for changing the pump
- Max. cutting length up to 600 mm
- Max. cutting depth up to 235 mm
- Removable water tub, easy for cleaning
- Foldable legs
- Removable blade guard for easy blade change
- Special water nozzle for optimized water cooling
- Transportation wheel, easy for moving



Honda gasoline engine



special water nozzle



transport handles



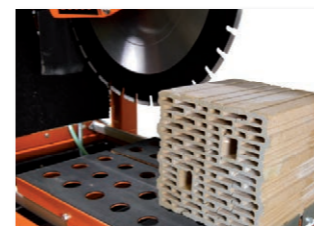
foldable legs



transport wheels



removable water tub



cutting depth up to 235 mm

| Specifications | GÖLZ BS600 |
|---------------------|---|
| Motor | 230 V / 400 V, 50 Hz, IP54 |
| Power | 2,2 kW |
| Max. cutting depth | 235 mm |
| Max. blade size | 600 mm |
| Arbor hole | 25,4 mm |
| Cutting length | 400 mm (280 mm material height) 600 mm (50 mm material height) |
| Shaft speed | 1.440 min ⁻¹ |
| 45° miter-cut | no |
| Water pump | S2, 230 V, 50 Hz, 55 Watt |
| Blade flange size Ø | 130 mm |
| Transport wheels | yes |
| Cutting table (LxW) | 600 x 525 mm |
| Dimensions (LxWxH) | 1.100 x 870 x 1.480 mm |
| Weight | 95 kg |
| Order number | 0282 600 1000 (230 V) 0282 600 1100 (400 V) |

| Accessories | Order number |
|--------------------------------------|---------------|
| Spare water pump with connector plug | 0289 400 9002 |

Powerful block saw for the long term use on the jobsite



Cutting length 500 mm
Blade-Ø 650 mm
Cutting depth 260 mm

- Torsion free chassis with 4 crane eyes
- Spring cutting head
- Cutting depth adjustable by manual lever
- Cutting cart with steel bearing rollers
- Handle for moving the cutting cart
- Professional water pump
- Adjustable angle stop
- 4 transport wheels, 2 with parking break
- Removable water tub, zinc coated

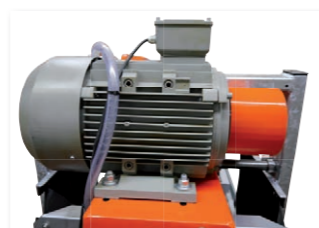
| Specifications | GÖLZ BS650 |
|---------------------|------------------------------------|
| Motor | 3-phase, 400 V, 50 Hz, 16 A, IP 54 |
| Power | 5,5 kW (7,5 PS) |
| Max. cutting depth | 260 mm |
| Max. blade size | 650 mm |
| Arbor hole | 60 mm |
| Cutting length | 500 mm |
| Shaft speed | 1.020 min ⁻¹ |
| 45° miter-cut | no |
| Water pump | electric |
| Blade flange size Ø | 120 mm |
| Transport wheels | yes |
| Cutting table (LxW) | 610 x 670 mm |
| Dimensions (LxWxH) | 1.600 x 800 x 1.500 mm |
| Weight | 230 kg |
| Order number | 0282 650 1000 |



cutting depth 260 mm
(blade size 650 mm)



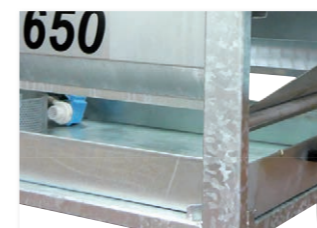
crane eye



powerful 5,5 kW motor



4 transport wheels - 2 with parking break



removable water tub, zinc coated

| Accessories | Order number |
|------------------|---------------|
| Spare water pump | 0282 650 0179 |
| Forkliffframe | 0282 650 9035 |

Powerful block saw for the long term use on the jobsite



Cutting length 600 mm

Blade-Ø 1.000 mm

Cutting length 420 mm

- Torsion free chassis with 4 crane eyes
- Cutting depth adjustable by manual lever
- Spring cutting head for cutting depth adjustment
- Professional water pump
- Adjustable angle stop
- Cutting head with steel bearing rollers
- 4 transport wheels, 2 with parking break
- Removable water tub, zinc coated



blade size Ø 1000 mm
cutting depth 420 mm



moving of the cutting head
by hand wheel



powerful motor 7,5 kW



4 transport wheels - 2 with
parking break



easy cutting depth
adjustment



removable water tub, zinc
coated

| Specifications | GÖLZ BS1000 |
|---------------------|------------------------------------|
| Motor | 3-phase, 400 V, 50 Hz, 32 A, IP 54 |
| Power | 7,5 kW (10 PS) |
| Max. cutting depth | 420 mm |
| Max. blade size | 1000 mm |
| Arbor hole | 60 mm |
| Cutting length | 600 mm |
| Shaft speed | 990 min ⁻¹ |
| 45° miter-cut | no |
| Water pump | electric |
| Blade flange size Ø | 160 mm |
| Transport wheels | yes |
| Cutting table (LxW) | 610 x 840 mm |
| Dimensions (LxWxH) | 2.000 x 1.100 x 1.550 mm |
| Weight | 280 kg |
| Order number | 0282 900 2020 |

| Accessories | Order number |
|------------------|---------------|
| Spare water pump | 0282 650 0179 |

| Specifications | Tile Saws | | Bridge Saws | | |
|---------------------|----------------------------|-------------------------|----------------------------|-------------------------|-------------------------|
| | GÖLZ TS200 | GÖLZ TS250 | GÖLZ GS350 | GÖLZ GS350A-M | GÖLZ GS350A-XL |
| Motor | Electric, 230V, 50Hz, IP54 | | Electric, 230V, 50Hz, IP54 | | |
| Power | 1,3 kW | | 2,2 kW | 2,2 kW | 2,2 kW |
| Max. cutting depth | 40 mm | 65 mm | 110 mm | 110 mm | 110 mm |
| Max. blade size | 200 mm | 250 mm | 350 mm | 350 mm | 350 mm |
| Arbor hole | 25,4 mm | 25,4 mm | 25,4 mm | 25,4 mm | 25,4 mm |
| Cutting length | 560 mm (720 mm) | 980 mm (1.140 mm) | 1.000 mm (1.200 mm) | 1.300 mm (1.500 mm) | 1.800 mm (2.000 mm) |
| Shaft speed | 2.800 min ⁻¹ | 2.800 min ⁻¹ | 2.800 min ⁻¹ | 2.800 min ⁻¹ | 2.800 min ⁻¹ |
| 45° miter-cut | Built-In | Built-In | Built-In | Built-In | Built-In |
| Water pump | S2, 230 V, 50 Hz, 55 Watt | | S2, 230 V, 50 Hz, 55 Watt | | |
| Blade flange size ø | 64 mm | 64 mm | 90 mm | 90 mm | 90 mm |
| Transport wheels | yes | yes | yes | yes | yes |
| Cutting table (LxW) | 720 x 480 mm | 1.140 x 480 mm | 1.200 x 530 mm | 1.650 x 529 mm | 2.000 x 529 mm |
| Dimensions (LxWxH) | 1.220 x 540 x 1.299 mm | 1.640 x 540 x 1.299 mm | 1.710 x 700 x 1.360 mm | 1.810 x 740 x 1.490 mm | 2.310 x 740 x 1.490 mm |
| Weight | 57 kg | 72 kg | 95 kg | 113 kg | 135 kg |
| Order number | 0289 200 1000 | 0289 250 1000 | 0289 350 3000 | 0289 350 4000 | 0289 350 5000 |

| Specifications | Masonry Saws | | Block Saws | |
|---------------------|---|--|--|---------------------------------|
| | GÖLZ MS700A Basic | GÖLZ MS700A | GÖLZ BS400 | GÖLZ BS400 |
| Motor | 230 / 400 V, 50 Hz, IP54 | 230 / 400 V, 50 Hz, IP54 | 230 V / 400 V, 50 Hz, IP54 | Honda GX160 |
| Power | 2,2 kW / 2,4 kW | 2,2 kW / 2,4 kW | 2,2 kW | 4,0 kW / 5,5 HP |
| Max. cutting depth | 280 mm | 280 mm | 150 mm (double-sided cutting 280 mm) | |
| Max. blade size | 700 mm | 700 mm | 400 mm | 400 mm |
| Arbor hole | 30 mm | 30 mm | 25,4 mm | 25,4 mm |
| Cutting length | 650 mm (280 mm material height) 800 mm (50 mm material height) | | 650 mm | 650 mm |
| Shaft speed | 1.450 min ⁻¹ | 1.450 min ⁻¹ | 2.650 min ⁻¹ | 2.550 min ⁻¹ |
| 45° miter-cut | no | no | No, Miter-block optional | No, Miter-block optional |
| Water pump | S2, 230 V, 50 Hz, 55 Watt | S2, 230 V, 50 Hz, 55 Watt | S2, 230 V, 50 Hz, 55 Watt | efficient mechanical water pump |
| Blade flange size ø | 140 mm | 140 mm | 90 mm | 90 mm |
| Transport wheels | no | no | yes | yes |
| Cutting table (LxW) | 510 x 540 mm | 510 x 540 mm | 600 x 530 mm | |
| Dimensions (LxWxH) | 1.630 x 760 x 1.600 mm | 1.630 x 760 x 1.600 mm | 1.110 x 640 x 1.400 mm | |
| Weight | 115 kg | 125 kg | 90 kg | 93 kg |
| Order number | 0289 700 2000 (230 V) 0289 700 1000 (400 V) | 0289 700 2010 (230 V) 0289 700 1010 (400 V) | 0282 400 1000 (230 V) 0282 400 1100 (400 V) | 0282 400 1300 |

| Specifications | Masonry Saws | | | |
|---------------------|----------------------------|--------------------------|-------------------------|-------------------------|
| | GÖLZ MS350C | GÖLZ MS350L | GÖLZ MS400 | GÖLZ MS400A |
| Motor | Electric, 230V, 50Hz, IP54 | | | |
| Power | 2,2 kW | 2,2 kW | 2,2 kW | 2,2 kW |
| Max. cutting depth | 110 mm | 110 mm | 137 mm | 137 mm |
| Max. blade size | 350 mm | 350 mm | 400 mm | 400 mm |
| Arbor hole | 25,4 mm | 25,4 mm | 25,4 mm | 25,4 mm |
| Cutting length | 560 mm | 700 mm | 700 mm | 800 mm |
| Shaft speed | 2.800 min ⁻¹ | 2.800 min ⁻¹ | 2.800 min ⁻¹ | 2.800 min ⁻¹ |
| 45° miter-cut | No, Miter-block optional | No, Miter-block optional | Built-In | Built-In |
| Water pump | S2, 230 V, 50 Hz, 55 Watt | | | |
| Blade flange size ø | 90 mm | 90 mm | 90 mm | 90 mm |
| Transport wheels | yes | yes | yes | yes |
| Cutting table (LxW) | 400 x 400 mm | 600 x 530 mm | 600 x 530 mm | 560 x 560 mm |
| Dimensions (LxWxH) | 960 x 670 x 1.250 mm | 1.100 x 720 x 1.250 mm | 1.100 x 720 x 1.290 mm | 1.390 x 750 x 1.330 mm |
| Weight | 56 kg | 63 kg | 66 kg | 79 kg |
| Order number | 0289 350 1000 | 0289 350 2000 | 0289 400 1000 | 0289 400 2000 |

| Specifications | Block Saws | | |
|---------------------|---|------------------------------------|------------------------------------|
| | BS600 | GÖLZ BS650 | GÖLZ BS1000 |
| Motor | 230 V / 400 V, 50 Hz, IP54 | 3-phase, 400 V, 50 Hz, 16 A, IP 54 | 3-phase, 400 V, 50 Hz, 32 A, IP 54 |
| Power | 2,2 kW | 5,5 kW (7,5 PS) | 7,5 kW (10 PS) |
| Max. cutting depth | 235 mm | 260 mm | 420 mm |
| Max. blade size | 600 mm | 650 mm | 1000 mm |
| Arbor hole | 25,4 mm | 60 mm | 60 mm |
| Cutting length | 400 mm (280 mm material height) 600 mm (50 mm material height) | 500 mm | 600 mm |
| Shaft speed | 1.440 min ⁻¹ | 1.020 min ⁻¹ | 990 min ⁻¹ |
| 45° miter-cut | no | no | no |
| Water pump | S2, 230 V, 50 Hz, 55 Watt | electric | electric |
| Blade flange size ø | 130 mm | 120 mm | 160 mm |
| Transport wheels | yes | yes | yes |
| Cutting table (LxW) | 600 x 525 mm | 610 x 670 mm | 610 x 840 mm |
| Dimensions (LxWxH) | 1.100 x 870 x 1.480 mm | 1.600 x 800 x 1.500 mm | 2.000 x 1.100 x 1.550 mm |
| Weight | 95 kg | 230 kg | 280 kg |
| Order number | 0282 600 1000 (230 V) 0282 600 1100 (400 V) | 0282 650 1000 | 0282 900 2020 |



GÖLZ® - Group

GÖLZ GmbH

**Dommersbach 51 | 53940 Hellenthal
Telefon +49 2482 12-0 | Fax +49 2482 12-222
info@goelz.de | www.goelz.de**

ÖSTERREICH

**Gölz Ges.m.b.H.
Samstr. 52 | A-5020 Salzburg
Telefon +43 662 438175 | Fax +43 662 430734
info@goelz.at | www.goelz.at**

FRANKREICH

**Gölz S.A.S.
1, rue de la Mairie | F-67370 Berstett
Telefon +33 3 88 59 43 00 | Fax +33 3 88 59 47 77
info@golz.fr | www.golz.fr**

GROSSBRITANNIEN

**Golz (UK) Ltd.
Unit A5 | Springhead, Enterprise Park
Northfleet | Kent DA 11 8HB
Telefon +44 1 474 321 679 | Fax +44 1 474 321 477
info@goelz.co.uk | www.golzuk.com**

BENELUX

**Gölz Benelux N.V. Belgien
Eupener Straße 61 | B-4731 Raeren-Eynatten
Telefon +32 87 55 23 49 | Fax +32 13 78 33 28
benelux@goelz.de | www.golzgroup.com**

USA

**Golz L.L.C.
5860 East Osage Ridge Lane | Columbia MO 65203-6018
info@golzusa.com | www.golzgroup.com**



Your GÖLZ dealer

